

Fast and Easy Access to Aerial Imagery



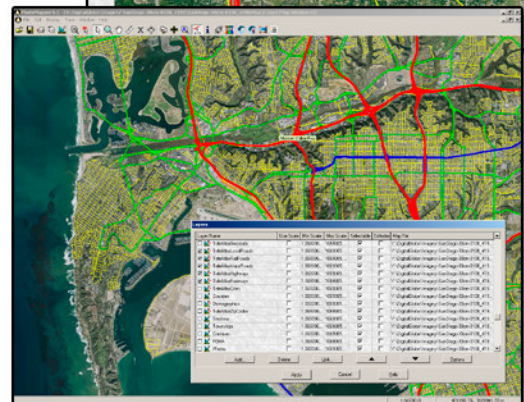
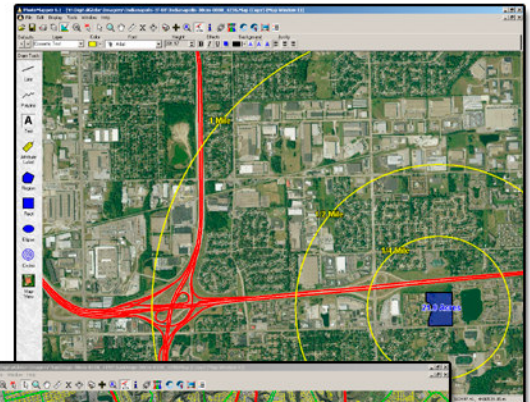
FEATURES

- > FASTEST AERIAL INTERFACE AVAILABLE!
- > Optimized for display speed and network efficiency
- > GIS Compatible with ArcGIS and MapInfo
- > Find locations by address, intersection, zip code or city
- > Draw Tools - add text, symbols, regions, logos
- > Measure Tool = measure distance and area in any unit
- > Auto label streets, cities, counties and more
- > Import SHP, MID/MIF and DXF files
- > Export GeoTIFF, JPG or BMP files
- > Print your map view or print from a layout window to add insets
- > Hotlink Tool - add any type of file to link to symbols or shapes on your map



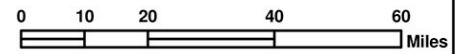
DATA OVERLAYS AVAILABLE FOR USE IN PHOTOMAPPER

- > Parcels and Zoning
- > Retail, Active/Future Housing, Apartments, Office and Industrial
- > Unique Regional Data
- > TeleAtlas Local Roads, Major Roads, Highways, Freeways, Zip Codes, and Cities
- > FEMA Flood Zone Data
- > PLSS Township, Range and Section Data
- > Additional Layers Include County Boundaries, Contour Lines and Photo Date Layer



** Actual PhotoMapper Screenshots*

Michigan



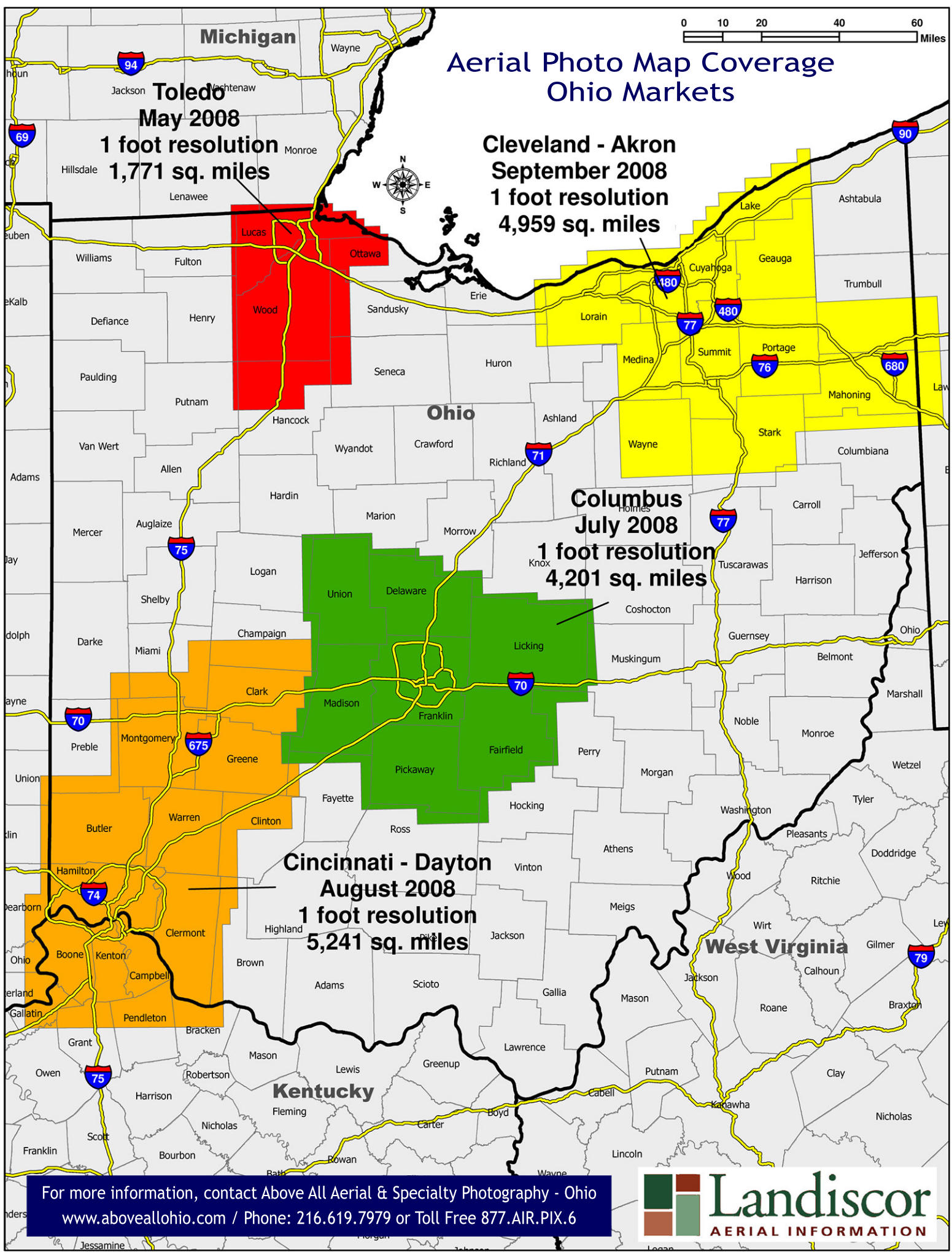
Aerial Photo Map Coverage Ohio Markets

Toledo
May 2008
1 foot resolution
1,771 sq. miles

Cleveland - Akron
September 2008
1 foot resolution
4,959 sq. miles

Columbus
July 2008
1 foot resolution
4,201 sq. miles

Cincinnati - Dayton
August 2008
1 foot resolution
5,241 sq. miles



For more information, contact Above All Aerial & Specialty Photography - Ohio
www.aboveallohio.com / Phone: 216.619.7979 or Toll Free 877.AIR.PIX.6

